

Public Participation Network Kildare



Training

Committee Skills Training



Date: 21st February 2024 **Time:** 10:30am

Location: Áras Chill Dara, Devoy Park, Naas, Co. Kildare

Description: This training integrates role clarity, collaboration, and proficient meeting management. Participants learn agenda setting, facilitation, and time optimisation while enhancing communication through active listening and feedback. Conflict resolution techniques will be explored, with a break-out session to explore real-world examples and solutions. The session will explore strategies for follow-up, accountability, and continuous improvement, fostering confident, efficient committee members adept at conducting impactful meetings aligned with organisational goals.

[Register here](#)

Canva for Beginners



Date: 28th February 2024 **Time:** 7:00pm

Location: Zoom

Description: Would you like to learn how to make eye-catching social media posts, flyers or poster? Canva is a free user friendly online graphic design tool. In this 2 hour training session you will learn about the interface, navigation, and essential features in Canva that will set the foundation for your graphic design journey

[Register here](#)



Funding Opportunities



EU Just Transition Fund (EU JTF): Community and Enterprise Grants Scheme

The EU JTF Community and Enterprise Grants Scheme has now been launched and is open for applications.

This scheme will provide up to €300,000 to community, voluntary and not-for-profit organisations, and micro and small to medium sized enterprises operating in the wider Midlands area.

The deadline for applications is **5pm, 22 February 2024**.

[Full details](#)



Community Heritage Grant Scheme 2024

Kildare County Council is inviting applications for the Community Heritage Grant Scheme 2023 from individuals, groups and organisations who are carrying out local heritage projects. The objective of the scheme is to support innovative approaches and initiatives that link heritage to communities, promote active engagement with heritage and its appreciation by the public.

Funding of up to €1500 is available for individual projects and activities eligible for funding under the Community Heritage Grant Scheme across the areas of heritage management, gathering heritage data, and raising awareness of heritage.

The closing date for receipt of applications is Friday 10th March 2023, 4.00pm.

[Full details](#)



Creative Ireland, Arts Grants, Commissions and Bursary Award opportunities for 2024

Kildare County Council has published details of 18 separate grants, commissions and bursary award opportunities to support the development and presentation of creative and artistic projects in the county in 2024. Applications will be accepted from individual artists and creatives, arts collectives, community groups, youth groups and schools.

Full details of each of the grants and application forms can be accessed [here](#)

Deadline 12pm, Wednesday 28th February 2024.

More funding opportunities:

- [Community Climate Action Programme Fund](#)
- [Fit for Life Awards](#)
- [Community Monuments Fund](#)



LEADER Open Evening



County Kildare LEADER Partnership is delighted to announce the opening of the LEADER 2024-2027 Programme. Come along to their open evening to find out about funding opportunities for community, social enterprise, farm diversification, environmental initiatives and creative enterprises.

Guest speakers on the night will include past applicants giving their top tips for successful applications and project management, with a Q&A session and a chance to talk one to one with the team and applicants who have been successful in the past.

[Find out more](#)

National Grief Awareness Week 22nd to 28th of January



Death is such a difficult thing for any of us to face. Despite it being widespread, grief is often misunderstood. Grief is a natural response to the death of someone close. It does not follow a definite pattern and can be different for everyone. The bereaved can be left feeling isolated, lonely and confused. Family and friends may be unsure how best support them. Learning more about grief can help someone before and during the grieving process and can also help the people supporting them.

[Find out more](#)

Féile Bríde programme for 2024 21st January to 10th February - Kildare Town



Brigid's Festival is a week long series of events commencing on the eve of St.Brigid's Day.

- **Jan 31st:** Pilgrimage on St. Brigid Eve
- **Feb 1st:** Cross Weaving Workshops

- **Feb 1st:** Altan & RTE Concert Orchestra in Concert
- **Feb 2nd:** "Dance the dance of God's own blessed Bríd"

- **Feb 3rd:** Revisiting the Customs and Traditions associated with St. Brigid

[Download full programme here](#)



How to plant a Hedgerow for biodiversity

Good quality hedgerows provide the four essential needs of biodiversity:

- 1 Sources of food: pollen, nectar, fruits
- 2 Places to breed
- 3 Places to nest and overwinter
- 4 Corridors to travel across the landscape

Native hedgerow species



Blackthorn



Dog Rose



Quail Rose



Hawthorn/Whitethorn



Hazel



Holly



Honey suckle



Spindle

The species listed above can all be regularly cut or managed in a hedgerow.

Don't use cultivated varieties

What should you plant?

- 1 Plant a diverse range of species, with no more than 70% of one species. Allow one tree to grow for every ten hedgerow plants.
- 2 Use native plants of Irish provenance. These are best for biodiversity, and will help stop the import and spread of pests and disease.

Trees in a hedgerow: the following native species can be planted to grow into a tree - Blackthorn, Hawthorn/Whitethorn, Holly, Crab Apple, Goat Willow, Grey Willow, Pendunculate Oak, Rowan, Sessile Oak and Wild Cherry.

Protecting Farmland Pollinators

National Biodiversity Data Centre

National Biodiversity Centre - Hedgerow Resources

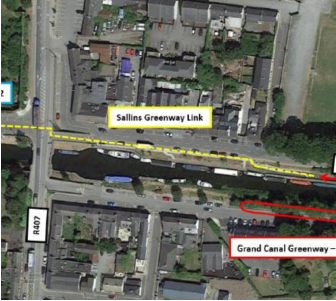
The National Biodiversity Data Centre have release two new free resources exploring the importance of native hedgerows, and how to plant them to help biodiversity.

Hedgerows are an integral part of Ireland's landscape, evident from an aerial perspective, they hold immense value for both humans and biodiversity. They provide food through blossoms and berries, act as crucial wildlife corridors, store carbon, and help mitigate fertilizer run-off.

[Find out more](#)



Public Consultations



Part 8 Public Consultation for the Proposed Sallins Grand Canal Greenway Link

Works Comprise improvements to the existing pedestrian and cycle infrastructure on the R407, the removal of existing vehicular ramp and provision of pedestrian/cyclist only ramp, the pedestrian ramp will have a smaller footprint which will bring greenway users from Canal View to the proposed crossing point on the R407.

[Full details](#)

More public Consultations:

- [Public Consultation on a Design Guide for Long-Term Residential Care Settings for Older People](#)
- [Proposed Amendment No. 1 to Leixlip Local Area Plan 2020 – 2023 \(as extended\)](#)
- [Green Paper on Disability Reform: A Public Consultation to Reform Disability Payments in Ireland](#)

Please circulate to members in your group/organisation

*You can unsubscribe from Kildare PPN at any time by e-mailing admin@kildareppn.ie.

[E-mail Us](#)



Public Participation
Network Kildare

[Visit Our Website](#)