



## Funding Opportunities

### Brigid 1500 Grant Schemes



Kildare County Council announce the launch of **Brigid 1500** Grant Schemes for projects to take place between 31st January 2023 to 31st December 2023.

Grant Schemes include:

- ◆ Community and Cultural Grant Scheme and
- ◆ Arts and Creativity Grants Scheme

Applications are invited for funding awards ranging from €1,500 to €15,000.

[Full details](#)



### Community and Voluntary Sector Energy Support Scheme

The Community and Voluntary Energy Support Scheme (CVESS) provides for a once-off payment to eligible charities and community voluntary sector organisations (with a Tax Registration Number and Tax Clearance Access Number) for their energy costs for 2022.

[Full details](#)

### Other Government Energy Schemes



**Sport Ireland** – If you are a sporting organization, club or network affiliated to Sport Ireland or one of the National Governing Sports Bodies, you should apply to [Sport Ireland](#) for support towards your energy costs.

**Arts Council** – If you are an Arts and Cultural organisation in receipt of Strategic Funding, Arts Grant funding or Arts Centre funding from the Arts Council in 2022, you should apply to the [Arts Council](#) energy scheme.

**Community Support Fund** – For organisations that are not incorporated (as Companies Limited by Guarantee or as Co-operatives) or that are not registered charities, for example, Parish Halls, Community Centres, Local Development Associations, Social Clubs, ICA Groups, Senior Citizen Groups, and much more, should apply for support towards energy or other running costs under this scheme via the Kildare Local Community Development Committee.

**Details of this fund will be available in the new year**

---



### **Waterways Ireland Heritage in the Community Grant Scheme**

A fund of €20,000 has been allocated to assist community based heritage projects which compliment or fulfil the delivery of the Waterways Ireland Heritage Plan along the Barrow Navigation, Erne System, Grand Canal, Lower Bann, Royal Canal, Shannon Navigation, Shannon-Erne Waterway and the Ulster Canal (Upper Lough Erne to Clones).

[Full details](#)

---

### **2023 - 2027 LEADER Programme**



€180 million in funding announced for the LEADER Programme for 2023-2027. The major investment will support thousands of locally-led rural development and enterprise projects over the next 5 years. This allocation is in addition to the €70 million already provided for LEADER for 2021 and 2022, bringing the total allocation for the seven year LEADER programming period of 2021-2027 to €250 million.

[Full details](#)

---



### **New €3 million creative climate action fund launched by Government**

€3 million fund launched to support imaginative creative projects that build awareness around climate change and empower citizens to make meaningful behavioural changes.

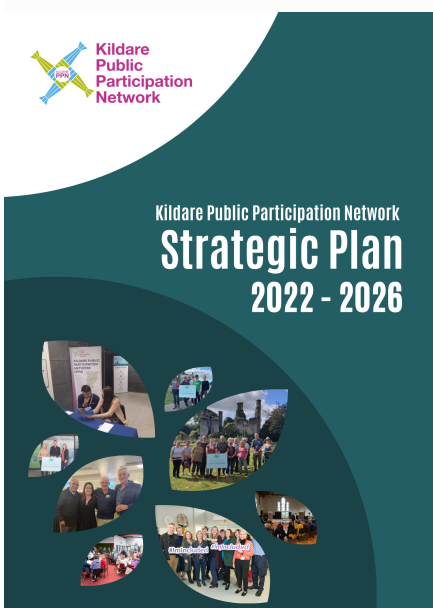
Applications for the scheme will open in December 2022 at [www.creativeireland.gov.ie](http://www.creativeireland.gov.ie)

---



## **Recent News**

### **Kildare PPN Strategic Plan 2022-2026**



We were delighted to launch the Kildare Public Participation Network Strategic Plan at our Plenary meeting on Monday the 21st of November in the Osprey Hotel.

This strategy will guide the priorities, vision and workplans of Kildare Public Participation Network in the years to come. It will ensure that the voices of all voluntary groups in Kildare are heard and that we will increase our influence in policy decisions at local government level.

[Click here to download Kildare PPN Strategic Plan 2022 - 2026](#)



# UPCOMING EVENTS

## Joint Policing Committee Annual Public Meeting



The Kildare Joint Policing Committee will be hosting its annual public meeting from 7:00pm to 9:00pm on Monday 5th December 2022.

**Venue:** The Glenroyal Hotel, Maynooth, Co. Kildare

**Theme:** Community policing

**Guest Speakers:** Dr. Johnny Connolly and Inspector Gavin Dunphy.

The public is invited to attend and participate on the night. For more information visit -

[www.kildarejointpolicing.ie](http://www.kildarejointpolicing.ie)

## The EMERGE Launch Webinar



EM Caro, Urban Foresight and The Wheel are holding a webinar introducing the “Eastern and Midlands Enabling Roadmap for the Green Economy” project on **14th December 10am - 11:30am**

This important project involves maximising the social and economic opportunities of climate action for Ireland, while consulting and supporting individual communities facing specific challenges in transitioning to a lower carbon economy.

[Find out more/register here](#)

# Training



## COMMUNITY EDUCATION Funding Spring 2023

**Learning Together: Nurturing Ourselves, Sustaining Communities**

We are now accepting applications for the following programmes. Come and join us!

### Outdoor Education/Green Skills

Getting Outside to Be Well – nature appreciation, social horticulture, yoga/somatic movement, upcycling,

### Social Media - IT Skills

Creating useful Social Media for your group. Promotional Video's for groups.

### Women's Perspectives through Art - Maynooth

We are one of 6 partners on this project to explore creative ways of working with women. If your group would like to host this course in Maynooth area get in touch.

### Community Education Core Courses

Has your group identified a need that you want to address and learn more about with your group? Do you need some ideas? How about hosting one of the following courses for your local community?

Building Personal Resilience  
Digital skills for Community Groups  
Learning Outdoors

Building Community Resilience  
Community Art and Creativity  
Place Based Projects

A Funding Workshop will take place on 14th Dec @ 10:30 to help Group/Organisation Leaders with completion of applications.

Applications can be completed online at  
<https://communityeducationkwetb.ie/funding-expression-of-interest/>

**To request a funding application form by post see contact details below;**



Call 045 - 881863



Closing date for applications 11/01/23 @ 5pm



Email [communityedkildare@kwetb.ie](mailto:communityedkildare@kwetb.ie) to book place on the workshop.

## Community Education Funding Spring 2023

KWETB Community Education are now accepting applications for a number of training programmes including:

- Outdoor Education/Green Skills
- Social Media/IT Skills
- Women's Perspectives through Art
- Community Education Core Studies

A funding workshop will take place on the 14th of December at 10:30am to help group leaders with completion of applications. Email [communityedkildare@kwetb.ie](mailto:communityedkildare@kwetb.ie) to book a place.



# Public Consultations



## The Wonderful Barn Leixlip

The Wonderful Barn project is about identifying the conservation works and refurbishment with potential new build of as well as the surrounding historic buildings and walled garden and the landscape development of the 20ha Park adjacent. We are interested to hear how the Public currently interact with this space. The results of this survey will help inform the outcome of this project.

[Take Survey](#)

### More Kildare County Council Public Consultations:

- [Draft Maynooth and Environs Transport Strategy - Public Consultation](#)
- [P82022.10 - Site Location: 352 Old Greenfield, Maynooth, Co. Kildare, W23 T3Y1 & Fitzgerald Close, Maynooth, Co. Kildare](#)
- [R445 Newhall Junction Improvement Project Compulsory Purchase Order \(No1\) 2022](#)
- [P82022-14 - Proposed social housing development and regeneration works at St. Patrick's Park, Rathangan, Co. Kildare.](#)
- [Residential Zoned Land Tax - County Kildare](#)
- [TAKING IN CHARGE OF ROADS & SERVICES - estates in Clane, Kildare Town, Maynooth, Monasterevin, Newbridge & Robertstown](#)

**Please circulate to members in your group/organisation**

\*You can unsubscribe from Kildare PPN at any time by e-mailing [admin@kildareppn.ie](mailto:admin@kildareppn.ie).

E-mail Us



Visit Our Website